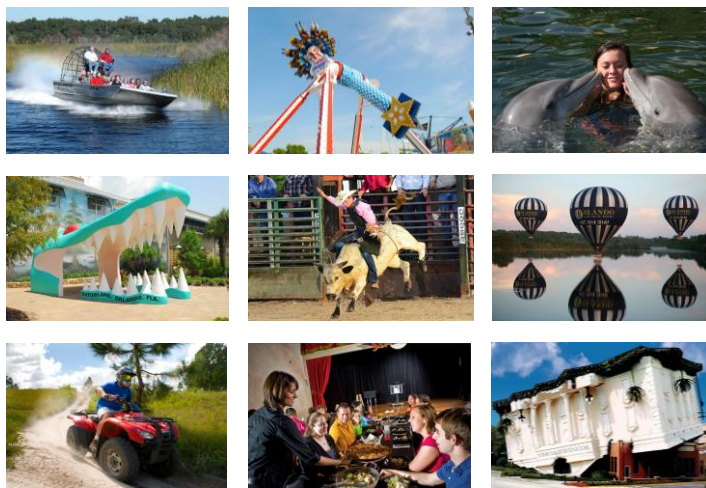


# Play4Less CARD



For the best deal on Florida attraction tickets, it's often cheaper to buy before you fly. However, we recognize that not all attraction ticket purchases will be made pre-departure. Therefore, we are pleased to offer the Orlando Play 4Less Card, providing you with an additional benefit of up to 20% off selected attractions and activities to make your spending money travel further.

No need to carry multiple coupons or gift certificates. Just present the Orlando Play 4Less Card at each attraction for instant savings. For a full list of attractions, visit [www.play4lesscard.com](http://www.play4lesscard.com)

## 20 participating attractions and over 50 great offers

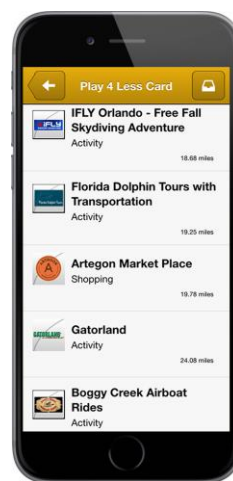
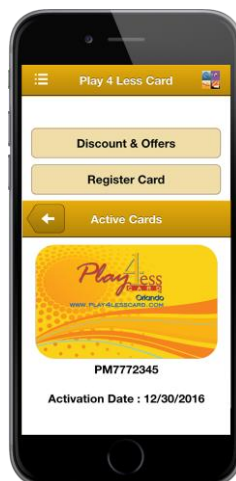


### Pricing

- Retail: \$14.99 per card (1 card valid for up to 4 people)
- \$\$\$ in savings

### Customer Benefits

- Over 50 offers with savings of up to 20%
- Each card is valid for up to 4 people
- Valid for 90 days from first use
- Makes the “what shall we do today?” decision easier
- Simply show the card and SAVE \$\$\$!!
- Handy app to register your card to your phone or tablet



# Easy User Guide

## How It Works

- Your tour operator or travel agent Includes the Play 4Less Card as part of your Orlando holiday package
- You will be provided with either a hard copy card, or an eCard generated like an airline eTicket.
- If pre-booking at the attraction is required, you can contact the participating venue to pre-book (if applicable). Let them know that you will be using your Play 4Less Card and get ready to save lots of \$\$\$.
- Sign and date your hard copy card or e-Card, and present it to the attraction at time of redemption. Each card may be used for up to 4 people.
- View the printable list of participating venues, and details of savings online at [http://www.play4lesscard.com/venue\\_compact\\_view](http://www.play4lesscard.com/venue_compact_view), scan the QR Code below or download the Play 4less Card App in iTunes or Google Play stores.



## Additional Information

- Each card, eCard or e-ticket must be signed and dated prior to first use
- Not to be used in conjunction with any other offers, coupons or promotional offers
- Offer has no residual value
- Offer is applied to full rates at the attractions ticket desk
- Black-out dates may apply
- Cards and e-Cards are non-transferable, subject to ID verification

## Contact Us



### Global Sales & Distribution

HAT Tourism Marketing

Tel: +44 203 044 2761 | email: [info@hatmarketing.com](mailto:info@hatmarketing.com)